



**CONSTRUCTION
COMPANY
INC.**

3821 Dee Cir., Anchorage, Alaska 99516
Phone 907-248-3666 | Fax 907-243-0145
www.fwalaska.com



STATEMENT OF QUALIFICATIONS





Celebrating 60 Years of Building Alaska

Our Mission: To help build and strengthen Alaskan infrastructure by providing the highest level of professionalism, innovation and quality craftsmanship. We are committed to working alongside our clients, owners, subcontractors and vendors as “Partners,” in order to provide timely cost-effective projects that add value to our communities.



Al Wiederholt, founder of F&W Construction Company

Who We Are

F&W Construction Company, Inc (F&W) is a third-generation General Contractor started by Ed Forsberg and Al Wiederholt in 1958. Over the last 60 years we have fine-tuned our skills and built a reputation based on safety, quality and innovation. F&W is skilled in completing a wide range of projects including structural steel construction, pre-engineered metal building erection, structural concrete construction, modular building construction and tenant improvement projects.

In addition to our building expertise, F&W has a firm grasp on the logistical and seasonal challenges we face living and working in Alaska's remote and unforgiving locations. Our office and field staff are experienced in mobilizing materials and equipment by barge, aircraft and heavy-lift helicopter in order to reach rural Alaska. Our knowledge and experience working in these areas helps to ensure our projects have the proper equipment, materials and man power to execute our work.

At F&W, our employees are our most important asset; therefore, safety remains at the forefront of everything we do. To safeguard this, we employ a strict company-wide Safety and Quality Control Program. Since its inception, we have built up an EMR rating of .79 and are trusted to secure and maintain a safe workspace. Additionally, F&W employs a Quality Control program, based on both Associated General Contractors (AGC) of America and the U.S. Army Corps of Engineers' (USACE) QC Programs. Our QC programs are project specific and carefully crafted to uphold owner and design team expectations. F&W's QC plans establish clearly defined responsibilities and authorities for compliance; every subcontractor and vendor involved on F&W projects are required to adhere and execute these project specific programs.

F&W's management style is to approach each project as a partnership between owner, client, subcontractor, vendor, etc. This inclusive strategy creates open lines of communication and cultivates a platform for quick and effective problem solving. F&W understands the importance of maintaining the project budget, we are experienced executing lump sum, guaranteed maximum price, design-build and construction manager/general contractor (CM/GC) contracts. Our long history in Alaska helps us guide our clients through value engineering and constructability reviews processes, which can lead



Celebrating 60 Years of Building Alaska

to considerable savings in both schedule and price.

F&W utilizes streamlined in-house systems and standard operating procedures in addition to the latest computer-based estimating, accounting and job cost accounting software. F&W utilizes Procore Project Management Software, which is a cloud-based, and captures project-wide documentation to include daily reports, photos, safety meetings, schedule, etc.

Overall, F&W's goal is to complete our projects safely, while maintaining quality, schedule and cost. We believe our skill and expertise allows us to meet the challenges of any project and look forward to further developing Alaska.



Unalakleet Elders' Assisted Living Facility: Unalakleet, Alaska

OVERVIEW OF SERVICES

We take pride in operating lean, but effectively, just as Alaskans do. To do this, our employees actively cross train in various construction disciplines, seeking out opportunities so field crews can continually strengthen their skill sets. Our multifaceted crews enable us to work efficiently, saving our clients time and money without sacrificing quality.

VERTICAL CONSTRUCTION	F&W has extensive experience delivering pre-engineered metal buildings, structural steel, and timber framed vertical construction projects in remote and urban Alaska locations.
DESIGN-BUILD & CM/GC PROJECTS	Our history and collaborative values has helped form strong bonds with a number of architectural, mechanical and electrical firms. These relationships help us to provide comprehensive and value-minded design-build and construction manager/general contractor (CM/GC) packages.
STRUCTURAL CONCRETE	Vertical construction and structural concrete go hand-in-hand. Our field crews provide quality craftsmanship that maintains structural integrity regardless of weather or location.
TENANT IMPROVEMENT	Our field crews take pride in their ability to perform intricate carpentry skills. They have the ability to demolish and clear existing office, medical space, etc. and transform it into state-of-the-art professional facilities.



Alaska Regional Hospital, Alaska Imaging Alliance: Anchorage, Alaska

Vertical Construction – Project Highlights



Juneau Snow Removal Equipment Building: Juneau, Alaska

This 41,500-sf Snow Removal Equipment Building facility is located in Juneau, Alaska. This project consisted of site work, structural steel, “Rain-Screen” curtain wall system, mechanical, electrical, HVAC, and safety and security systems, as well as specialized heavy maintenance equipment. Located on airport property, F&W field crews maintained strict FAA safety guidelines.

Alaska Clean Seas (ACS) Facility Upgrades: Deadhorse, Alaska

This facility upgrade project took place on the North Slope. F&W was approached for value engineering input and submitted a proposal to provide a structural steel building in lieu of the proposed modular design. The result was a budget savings of over \$500,000, and an accelerated project schedule. F&W completed this in 10 short months on Alaska’s North Slope.



Unalakleet Elders Assisted Living Facility: Unalakleet, Alaska

This 10,000-sf elder’s assisted living facility came two months after working closely with the Village of Unalakleet to help this project meet funding restraints. F&W found cost savings equaling over one million dollars. Like any rural village, F&W relies on barge service to get equipment and materials to site. FW worked with three barge companies to secure the required space necessary to mobilize project materials and equipment.





**Phase 2 New Harbor
Development Upland
Facilities: Valdez, Alaska**

F&W completed the construction of three upland facility buildings for the new Valdez Harbor. The scope of work included the construction of a pre-engineered metal building that served as a warehouse/garage, laundry and public shower facility. Also included was the construction of a timber

framed bilge building that housed bilge water intake equipment, water tanks, mechanical equipment and controls and a CMU clad public restroom building. F&W installed the exterior sitework that surrounded each of the three buildings to include, sidewalks, curbs and gutters. This project was completed in conjunction with the installation of the new harbor.

Kelsey Dock Interpretive Center: Valdez, Alaska

This project took place at the John Thomas Kelsey Municipal Dock, a cruise ship terminal for the City of Valdez. The scope of work consisted of the demolition of existing harbor facilities and build out of an existing CMU building, installation of structural steel and architecturally exposed structural steel canopy, architectural features, interpretive signage and installation of cedar soffit and high-end audiovisual improvements. This state-of-the-art Interpretive Center welcomes all cruise ship passengers into the City of Valdez and is located in the same parking lot as the Valdez Ferry Terminal, this required extra coordination effort in order to maintain traffic control.



Design/Build and Construction Manager/General Contractor (CM/GC)

Project Highlights

Alaska Park Airport Parking Facility: Anchorage, Alaska

This project consisted of a 48,000-sf parking structure and customer service center, including a complex structural steel system. F&W played a crucial role during design and constructability reviews alongside the design team Ivy & Co., and PDC Engineers. A significant value engineering concept introduced by F&W was incorporated into the project; the use of a longer primary steel member (made possible only by the use of a seldom used rail spur) to transport 90' beams to the site, utilizing a project specific hoisting method. These long span beams eliminated costly full penetration field welds and structural footings, resulting in a significant savings to the project.

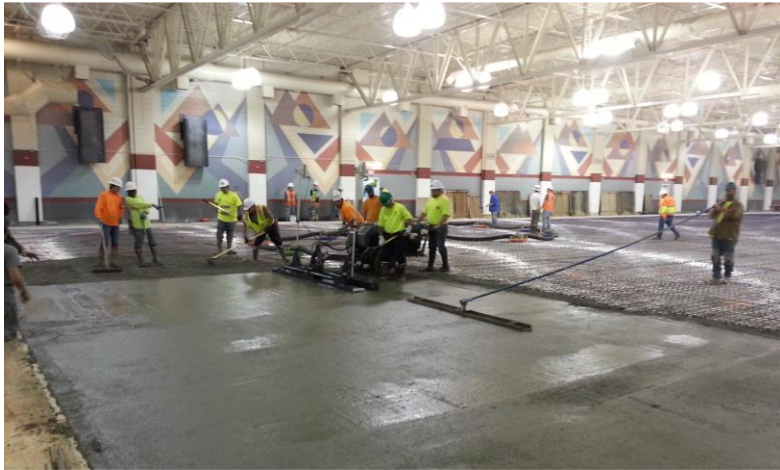


OSI Freezer Warehouse: Unalaska, Alaska

This Design/Build project included the delivery and installation of a 24,000-sf pre-engineered metal building in Unalaska. This building is utilized for the loading, offloading and sorting of seafood for a commercial freezer facility and the installation of a six-bay loading dock. Also, included was over half a million dollars of electrical infrastructure upgrades. F&W installed all site work, structural steel and structural concrete.

F&W is a proud member of the Associated General Contractors of America, Alaska Chapter. This relationship gives us access to over 600-member companies who cast a wide net in construction related services across Alaska. These relationships provide us qualified team members who have years of experience serving projects in Alaska.

Structural Concrete – Project Highlights



Dempsey Anderson Ice Arena: Anchorage, Alaska

During the summer of 2016, F&W teamed with longtime partner, Mantech Mechanical, to perform structural concrete and flatwork for the renovation of Dempsey Anderson Ice Arena. F&W worked around the clock in order to ensure quality mix design and concrete pours. Municipality of Anchorage approached Mantech and F&W for this work based on our previous experience renovating the Ben Boeke Ice Arena during the previous summer.

Little Red Services: Prudhoe Bay, Alaska

F&W constructed this 8,000-sf heavy equipment shop facility in Prudhoe Bay for Little Red Services. This project was procured under a design/build contract, and consisted of a structural concrete foundation and a structural steel building package. F&W worked alongside Rohde & Associates, ManTech Mechanical, and Samson Electrical to generate project approach and assist with constructability reviews.



OSI Freezer Warehouse: Unalaska, Alaska

F&W was approached to complete this design-build project, which consisted of the delivery of a 24,000-sf pre-engineered metal building for the loading, offloading, and sorting of seafood and a commercial freezer facility. Our scope of work also included the construction of a 6-bay loading dock facility. This project required the install of over half a million dollars in structural concrete to include foundation, floor slabs and the loading dock.

Tenant Improvement – Project Highlights

Tenant Improvement projects bring a unique opportunity of working alongside the general public. In order to mitigate this and maintain job site safety, our crews typically adhere to night shifts to limit distractions often felt by neighboring tenants. This flexibility has allowed us to secure a relationship with several large entities including, Alaska Regional Hospital, Ice Services, Coldwell Bankers, Alaska Native Tribal Health Consortium, and University of Alaska, Anchorage.



University of Alaska Anchorage Bookstore: Anchorage, Alaska

This project was completed during the beginning of the school year and coincided with school registration, one of the busiest times for the bookstore. In order to accommodate this, F&W crews worked in shifts and maintained clear communication and scheduling updates to the owners and bookstore staff to guarantee safety. F&W crafted a phasing plan that would allow students access to portions of the store in order to meet their needs.

Alaska Regional Hospital: Anchorage, Alaska

Over the past six years, F&W has maintained a relationship with Alaska Regional Hospital completing several tenant improvement projects. Since we began working on their campus, we have renovated over 250,000-sf of office and medical space and completed over \$7 million dollars in work. F&W recognizes the sensitivity required in completing this work, and is successful with creating phased project approaches in these sensitive environments. Recently F&W has responded to earthquake damage from the November 30, 2018 earthquake. We completed work in four buildings on campus, totaling 59 suites.



Duke Hotel Renovation: Anchorage, Alaska

A Cook Inlet Housing Authority project, Duke consisted of a four-story 17,000 sf renovation in downtown Anchorage. The design intent was to demolish existing finishes, windows, roof top, mechanical and electrical fixtures and infrastructure and replace with new, energy efficient products. Our scope increased roughly 33%, due to unforeseen conditions such as the discovery of hazardous materials. Despite the significant increase in scope, we will finish this project within the original time allotted by the Owner.



Terry Miller Legislative Building Window & Exterior Renovations: Juneau, Alaska

Renovation of three-story legislative office building in downtown Juneau to include installation of 101 new windows, window infill's and installation of new siding. This work requires detailed

phasing on each floor, as crews are only allowed access to three offices at a time. In addition, a large portion of the windows were found to contain asbestos and required additional testing, abatement and additional safety precautions, as the building was occupied throughout construction. The building is positioned, within an arm's reach in some cases, directly adjacent to neighboring homeowners, our crews executed flawless safety and scaffolding practices in order to install new siding around the exterior of the building.



Celebrating 60 Years of Building Alaska

TESTIMONIALS

"F&W did a great job of managing subcontractors and keeping the project moving forward. Robby Capps was especially responsive in maintaining a positive, "can do" attitude to ensure that the JNU Airport got the quality of building that was expected."

Catherine Fritz, AIA
Juneau International Airport

"Our company has worked with F&W for over 15 years, F&W field crews and office staff are easy to communicate with and are collaborative in project approach. I have complete confidence in their ability to construct a quality project that meets the needs of their clients."

Dave Brown, Vice President
Mantech Mechanical, Inc.

"F&W Construction – good company, very knowledgeable, experienced, skilled, safe, timely, fair and honest, customer oriented, good value. I look forward to working with them again."

Douglas Washburn
FAA Anchorage Air Route
Traffic Control Center

"F&W clearly understood their obligation under the contract and took a significant amount of time, continually working with our Operations/Project manager concerning timeline, construction phasing and tasks involved for construction. F&W ranks high in Customer Service."

Lindy Theis, Vice President
Alaska Clean Seas

"F&W Construction is a great construction contractor. They are competent and personable, complete projects on time and more importantly, bring a general willingness to work as a goal-oriented team player in the construction process."

Shawn Holdridge
Building Systems & Energy Sustainability Manager
Cook Inlet Housing Authority

"F&W Construction completed our \$10 million Design-Build Brice Equipment Shop and office facility in Deadhorse, Alaska on time and under budget. Mr. Capps and his staff communicated with us throughout the entire project and we were more than pleased with the quality of their workmanship."

Sam Robert Brice
President
Bilista Holding Companies



Celebrating 60 Years of Building Alaska

PROUD TO SERVE

ACE Flyers, Inc.	City of Unalakleet	McCool Carlson & Green
Alaska Clean Seas	City of Valdez	North Slope Borough
Alaska Court System	Coldwell Banker Commercial	Norton Sound Economic Development Corporation
Alaska Housing Finance Group	Cook Inlet Housing Authority	Nushagak Electric & Telephone Cooperative
Alaska Interstate Construction	Cruz Construction	Offshore Systems, Inc.
Alaska Masterpark, LLC	Enstar Natural Gas Company	Pacific Pile & Marine LP
Alaska Native Tribal Health Consortium	EEIS Consulting Engineers Inc.	Parsons Government Service Inc
Alaska Railroad Corporation	Federal Aviation Administration	Pioneer Natural Resources
Alaska Tourism Development, LLC.	Firehouse Subs	PTP Management
Alcan Electrical & Engineering Inc.	GBR Equipment, Inc.	Raytheon Service Company
Anchorage School District	Ice Services	Simon Property Group
Brice Incorporated	Knik Construction Co., Inc.	State of Alaska DOT/PAF Juneau
Bristol Bay Native Association	Kulis Air National Guard	State of Alaska DOT/PF Anchorage
Chugach Electric Association Inc.	LifeMed Alaska	State of Alaska Legislative Affairs Agency
CIRI	Lincoln Harris CSG	Tetra Tech
City & Borough of Juneau	Little Red Services, Inc.	University of Alaska Anchorage
City of Dillingham	Mantech Mechanical, Inc.	U.S Army Corps of Engineers
City of Unalaska	Matheson Tri-Gas, Inc.	U.S Coast Guard